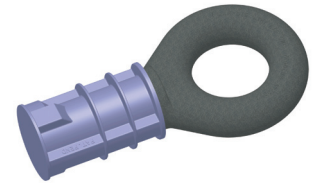


# Other

## Lifting Systems

Manhole



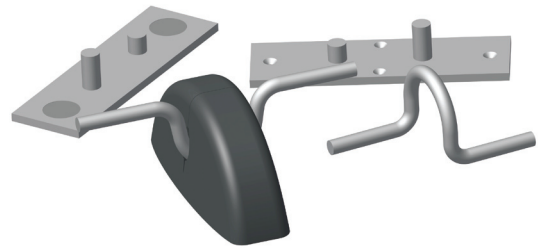
Stone Strong



Heba-T



Transfix

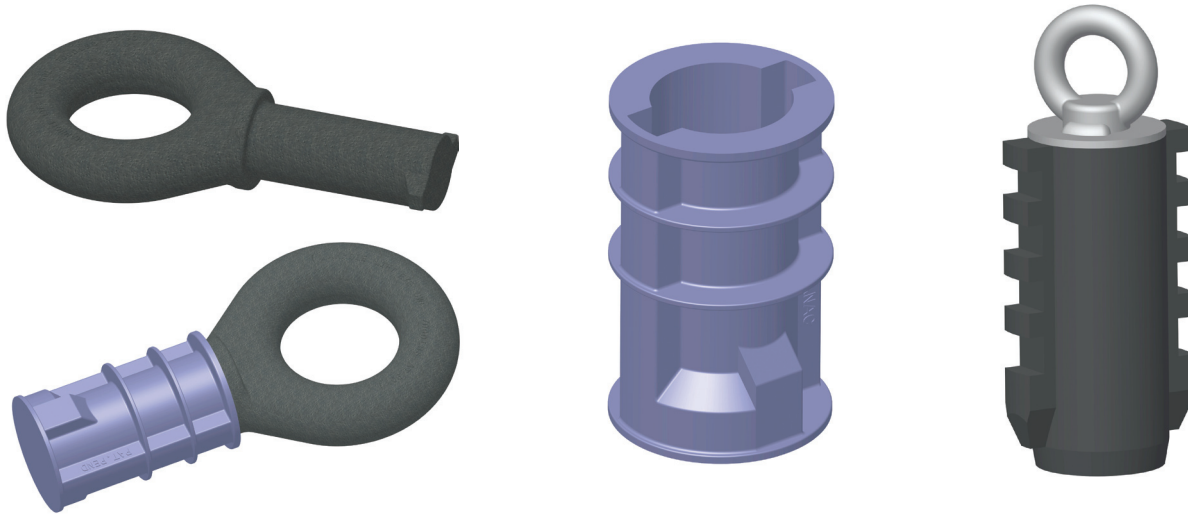


# MANHOLE



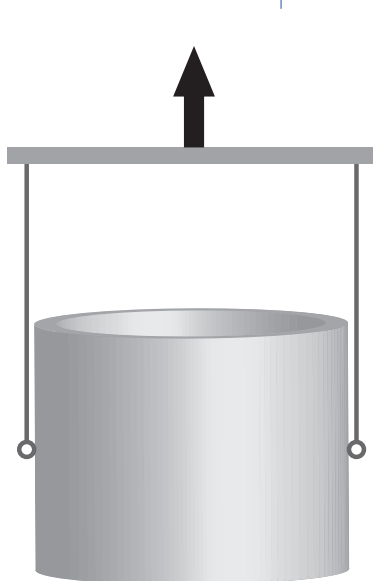
## THE CONAC MANHOLE LIFTING SYSTEM

Is a four component system that may be used in wet-cast and/or dry-cast manhole production. The system includes the MLE-35 Manhole Lifting Unit, the MPI 05 Plastic Manhole Insert and the MPI Bolt (and plug) assembly for fixing the manhole plastic insert to the form.



Fits in Walls 4" and up. One piece plastic hole former (MPI05) improves vacuum testing performance.

PART NO.	PART NO.	PART NO.
MLE-35	MPI05	MPI BOLT
<p>MLE-35 MANHOLE LIFTING UNIT Lifter to be inserted into the plastic Insert and rotated 90 degrees SWL is 3.5T with 5:1 Safety Factor in SHEAR.</p> <p>THIS LIFTER SHOULD NEVER BE USED IN TENSION</p>	<p>MPI 05 PLASTIC MANHOLE INSERT One piece design with sealed bottom To accommodate vacuum testing Insert to be installed with "keyway" in horizontal position</p>	<p>MPI BOLT (WITH PLUG) For fixing manhole plastic insert to the form</p>



PREFERRED LIFTING METHOD



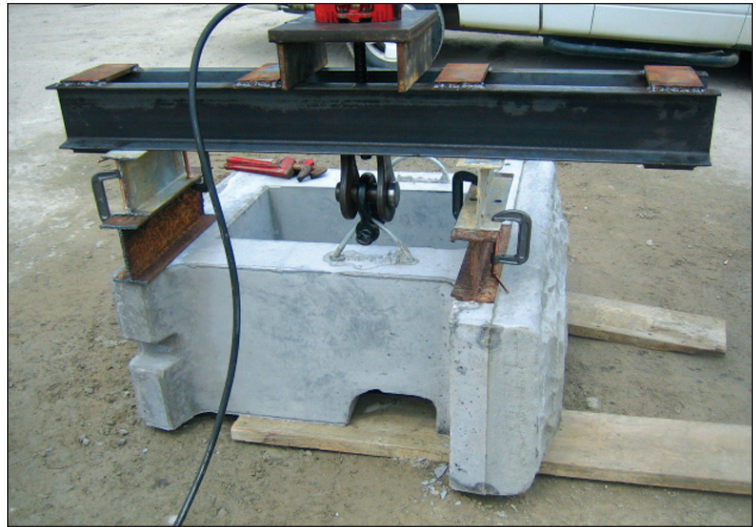
ACCEPTABLE LIFTING METHOD

# STONE STRONG

CONAC  
Concrete Product Solutions

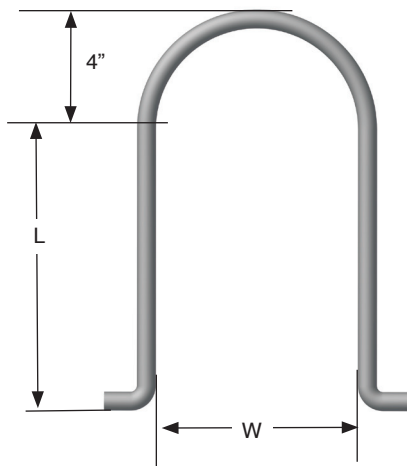
The CONAC Stone Strong Anchor has been tested in actual Stone Strong elements and proven to exceed required load capacities.

Test results are available upon request.



## CONAC STONE STRONG ANCHORS

The CONAC Stone Strong anchors are engineered to handle all sizes of Strong Stone pieces. They are made of galvanized carbon steel. They are the only anchors approved by Strong Strong Company.



ITEM #	ANCHOR WIRE DIAMETER	W	L	WEIGHT	SWL (LBS)
CSSA-5	14 mm	3"	5"	0.92 LB	2500
CSSA-10	14 mm	8"	10-6/8"	2.45 LB	7500
CSSA-10-18	18 mm	8"	10-6/8"	3.90 LB	10000

CSSA-5 used in top blocks only.

CSSA-10 used in all standard blocks.

CSSA-10-18 used in the 6'x6'x2' blocks

# RECON & A-W ANCHORS

**CONAC**  
Concrete Product Solutions

## RECON-2 (ALL PURPOSE ANCHOR)

Lifting Anchor for Recon retaining walls.

Can replace wire rope anchors in other retaining wall systems and in other miscellaneous products.

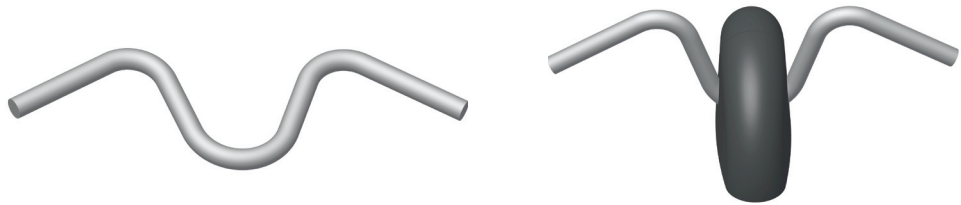


ITEM #	WIRE DIAMETER	WIDTH	LENGTH	WEIGHT	SWL (LBS)
AP-1/4x6	1/4"	2-7/8"	6"	0.175 LB	1600
RECON-2	3/8"	2-1/2"	7"	0.51 LB	4200
AP-7/16x9	7/16"	3-7/8"	9"	0.975 LB	7500

Note: SWL provides a factor of safety of approximately 4:1 in 2,500 psi normal weight concrete.

## A-W ANCHOR

For face lifting flat slabs in tension.



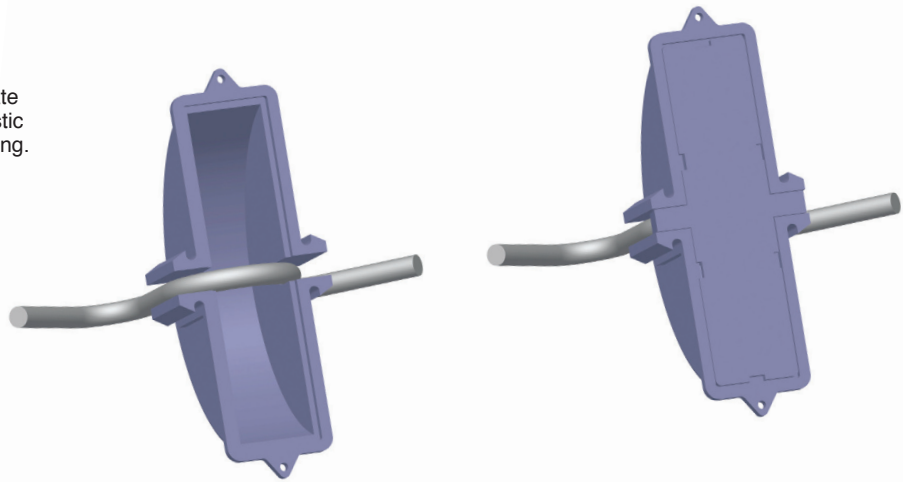
ITEM #	WIRE DIAMETER	WIDTH	HEIGHT	LENGTH	WEIGHT	SWL (LBS)
A-W Anchor	1/2"		3-1/2"	11-3/4"	0.83 LB	<b>4500</b>
A-W RRF		2"	3"	6-1/2"		

Note: SWL provides a factor of safety of approximately 4:1 in 2,500 psi normal weight concrete.

# HEBEFIX

## HEBEFIX D8

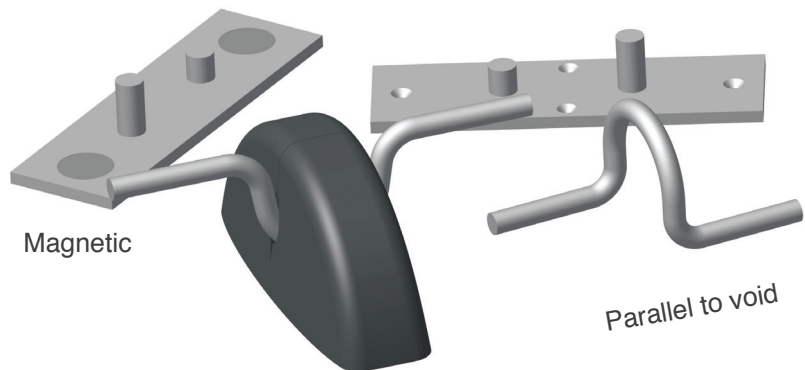
Economical lifting for thin slab products. Available with either a plastic setting plate or snap-off cover for clean storage. Plastic void former allows for standard hook lifting. Designed for 3" thick concrete.



PART NO.	DESCRIPTION	TENSION CAPACITY 4:1 SAFETY FACTOR	MINIMUM CONCRETE THICKNESS	MINIMUM EDGE DISTANCE
HEBEFIX D8 US	8MM anchor lift hook	<b>1,500 lbs</b>	3"	6"
HEBEFIX COVER D8	Hebefix plastic cover			
HEBEFIX COV. MAG	Hebefix Magnet cover			

## HEBA-T

Economical lifting for thin slab products. Available with either a steel setting plate or reusable rubber recess former for clean storage. Reusable rubber recess void former allows for standard hook lifting. Designed for 3" thick concrete.



PART NO.	DESCRIPTION	TENSION CAPACITY 4:1 SAFETY FACTOR	MIN. CONCRETE THICKNESS	MIN. EDGE DISTANCE
HEBA-T ANCHOR	8MM anchor lift hook	<b>1,500 lbs</b>	3"	6"
HEBA-T ANCHOR-1	8MM anchor lifting hook, parallel to void			
HEBA-T MAG	Heba-T magnetic plate			
HEBA-T PLATE	Heba-T steel setting plate			
HEBA-T RRF	Heba-T reusable rubber recess former			

# TRANSFIX

**CONAC**  
Concrete Product Solutions

## TRANSFIX

Economical and effective method for light duty lifting in tension. Ideal for applications requiring a permanently accessible concealed lifting anchor.

Galvanized loop swings back into box after use and is sealed with a plastic cap. A small lifting hook is used to engage with the loop. Requires the use of reinforcement.

(Depends on depth of concrete and length of reinforcement)

Main anchor body is 4-9/16" x 2-3/16" x 3/4".

Manufactured from grey plastic.

PART NO.	TENSION CAPACITY TONS	MINIMUM CONCRETE THICKNESS	MINIMUM EDGEDISTANCE
Transfix B	Up to 1.4	6"	8"

