

Plastic

Spacers



REBAR SPACERS



LOCKING WHEEL

The CONAC Wheel Chairs are the strongest wheel chairs on the market. The patented locking system will not allow the wheel to rotate around the rebar or slide along the rebar, assuring that the rebar will stay in place. CONAC Locking Wheels are available for cover from 1" to 3".

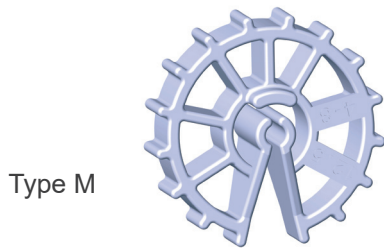


U.S. Patents # 7,451,579

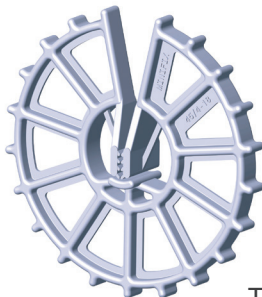
REFERENCE	CONCRETE COVER	BAR SIZE	QTY/CTN.
RW10L	1"	3 & 4	1000
RW12L	1 1/4"	3 & 4	1000
RW15L	1 1/2"	3-6	1000
RW20L	2"	3-6	500
RW25L	2 1/2"	3-7	300
RW30L	3"	4-8	250

REBAR WHEELS

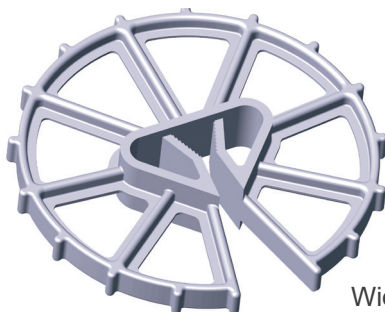
Spacer for universal use. Clamping tongues for a wide range of bar sizes. Wide contact surface and foot members increase load-carrying capacity and prevent tipping. Open construction which does not interrupt concrete flow. Minimal contact with formwork.



Type M



Type M5-M6



Wide range rebar

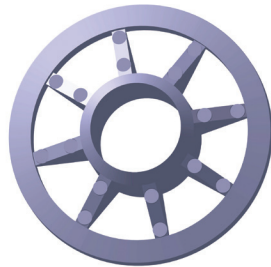
PART NO.	SIZE MM	CONCRETE COVER	BAR SIZE	QTY/CTN.
RW05M	12.5/4-8	1/2"	1-2	4000
RW58M	15/4-8	5/8"	1-2	4000
RW58M4	15/8-12	5/8"	2-4	2000
RW58M5	15/10-14	5/8"	3-5	2000
RW585	15/14-18	5/8"	5-6	2000
RW75M	20/4-8	3/4"	1-2	2000
RW75M3	20/6-10	3/4"	2-3	2000
RW75M5	20/6-18	3/4"	1-6	1000
RW75M6	20/4-18	3/4"	1-6	1000
RW10M	25/6-10	1"	2-3	2000
RW10M5	25/4-18	1"	1-6	500
RW103	25/10-14	1"	3-5	1000
RW145	25/12-16	1"	4-5	1000
RW121	30/4-8	1 1/4"	1-2	500
RW126	30/4-18	1 1/4"	1-6	500
RW15M	40/4-8	1 1/2"	1-2	500
RW15M5	40/4-18	1 1/2"	1-6	500
RW153	40/8-12	1 1/2"	2-4	500
RW154	40/12-20	1 1/2"	4-6	250
RW158	40/20-30	1 1/2"	6-8	250
RW20M	50/4-10	2"	1-3	500
RW20M6	50/4-18	2"	1-6	250
RW203	50/8-12	2"	2-4	250
RW204	50/12-20	2"	4-6	250
RW238	60/4-18	2 1/2"	1-6	250
RW254HD	60/12-28	2 1/2"	4-8	200
RW259	60/12-28	2 1/2"	4-8	200
RW30M5	75/4-18	3"	1-6	200
RW306	75 20-26	3"	6-7	100
RW375	95/5-10	3 3/4"	M-3	150
RW449	100/12-32	4"	4-9	75
RW40M5	100/4-18	4"	1-6	75

REBAR SPACERS



SPUNCAST WHEEL

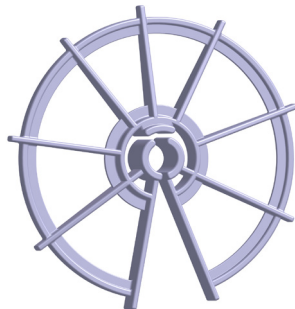
Special rebar wheel used in the manufacturing of spuncast utility poles.



REFERENCE	CONCRETE COVER	BAR SIZE	QTY/CTN.	COLOR
RW 10MM	3/4"	5	2000	Gray
RW 10MMB	3/4"	5	2000	Black
RW 10MMG	3/4"	5	2000	Green

PICOFIX

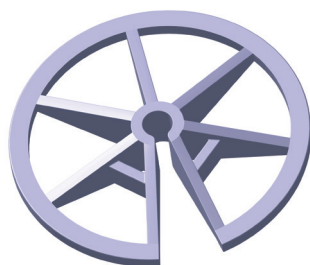
Economical round spacer with extra wide bar support. Minimal formwork contact.



PART NO.	SIZE MM	CONCRETE COVER	BAR SIZE	QTY/CTN.
RW58MP	15/5-10	5/8"	M-3	5000
RW75MP	20/5-10	3/4"	M-3	4000
RW10MP	25/4-8	1"	M-3	2000
RW12MP	30/5-10	1 1/4"	M-3	2000

SPARFIX

Inexpensive spacer for use in precast.



PART NO.	SIZE MM	CONCRETE COVER	BAR SIZE	QTY/CTN.
RW05MS	10/3-5	3/8"	Mesh	10000
RW58MS	15/3-5	5/8"	Mesh	4000
RW75MS	20/3-5	3/4"	Mesh	2000
RW10MT	25/3-5	1"	Mesh	4000

REBAR CLIPS

NORMFIX

Heavy duty chairs.



PART NO.	CONCRETE COVER	BAR SIZE	QTY/CTN.
Normfix20	3/4"	2-7	500
Normfix25	1"	2-7	500
Normfix30	1 1/4"	2-7	500
Normfix40	1 1/2"	2-7	250
Normfix50	2"	2-7	250

BAR CLIPS

Stable clip-on spacer for #4 & #5 Bar.



PART NO.	SIZE (MM)	CONCRETE COVER	BAR SIZE	QTY/CTN.
BCL 75	20/12-16	3/4"	4-5	1000
BCL 10	25/12-20	1"	4-6	1000
BCL 15	40/12-16	1-1/2"	4-5	1000
BCL 20	50/12-20	2"	4-6	1000

MESH CLIPS

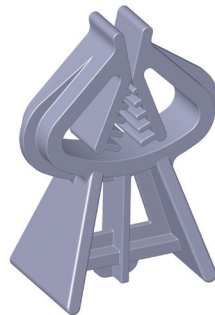
Economically priced spacer for use in low-load situations.



PART NO.	SIZE (MM)	CONCRETE COVER	BAR SIZE	QTY/CTN.
MCL75	20/5	3/4"	1	10000
MCL10	25/5	1"	1	10000
MCL15	40/5	1 1/2"	1	7500
MCL20	50/5	2"	1	5000

REBAR CLIPS

Stable bottom spacer with large clamp range.



PART NO.	SIZE (MM)	CONCRETE COVER	BAR SIZE	QTY/CTN.
RCL05	15/4-12	5/8"	1-4	4000
RCL75	20/4-16	3/4"	1-5	4000
RCL10	25/4-16	1"	1-5	3000
RCL12	30/4-12	1 1/4"	1-5	2000
RCL15	40/4-16	1 1/2"	1-5	1000
RCL20	50/4-18	2"	1-6	1000
RCL24	60/4-18	2 1/4"	1-6	1000
RCL25	65/4-18	2 1/2"	1-6	1000
RCL30	75/6-20	3"	2-6	500

SNAPFIX

Stable, sturdy spacer. Low-cost, good concrete flow. Minimal formwork contact because of edge position.



PART NO.	CONCRETE COVER	BAR SIZE	QTY/CTN.
Snapfix25	1"	M-4	1000
Snapfix30	1 1/4"	M-4	1000
Snapfix40	1 1/2"	M-4	1000
Snapfix50	2"	M-4	500
Snapfix60	2 3/8"	M-4	500
Snapfix70	2 3/4"	M-4	250
Snapfix80	3"	M-4	250
Snapfix90	3 1/2"	M-4	250
Snapfix100	4"	M-4	250

REBAR CHAIRS



CROSS CHAIR

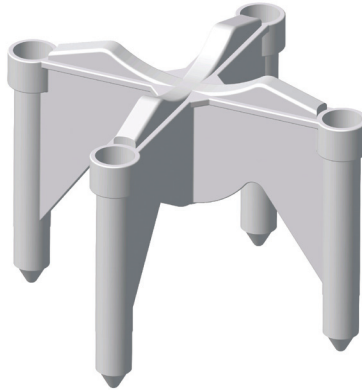
Cross chair is a stable, sturdy chair for bottom reinforcement. Allows excellent concrete flow with minimal form contact.



PART NO.	CONCRETE COVER	BAR SIZE	QTY/CTN.
CR75	3/4"		1000
CR10	1"	FOR	1000
CR12	1-1/4"	ALL	1000
CR15	1-1/2"	BAR	1000
CR20	2"	SIZES	500
CR22	2-1/4"		200

STACKABLE HIGH CROSS CHAIR

High Cross Chair is stable, sturdy chair for top mat reinforcing. Chairs are stackable to provide additional height.



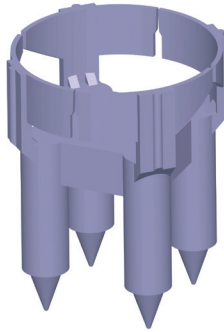
White Only

PART NO.	CONCRETE COVER	BAR SIZE	QTY/CTN.
CR25	2-1/2"	FOR ALL BAR SIZES	200
CR27	2-3/4"		200
CR30	3"		200
CR32	3-1/4"		200
CR35	3-1/2"		200
CR37	3-3/4"		200
CR40	4"		200
CR42	4-1/4"		200
CR45	4-1/2"		200
CR47	4-3/4"		200
CR50	5"		200
CR52	5-1/4"		200
CR55	5-1/2"		200
CR57	5-3/4"		200
CR60	6"		200
CR65	6-1/2"		200
CR70	7"		200

REBAR CHAIRS

AC CHAIRS

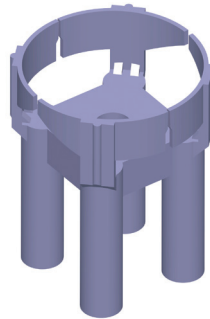
Stable for vertical and horizontal reinforcement. Good concrete flow. Tapered legs to ensure minimal form contact. Perfect for exposed aggregate surfaces.



PART NO.	SIZE MM	CONCRETE COVER	BAR SIZE	QTY/CTN.
AC05	15/6-20	5/8"	Mesh-8	1000
AC75	20/6-20	3/4"	Mesh-8	1000
AC10	25/6-20	1"	Mesh-8	1000
AC14	30/6-20	1 1/4"	Mesh-8	1000
AC15	40/6-20	1 1/2"	Mesh-8	1000
AC20	50/6-20	2"	Mesh-8	1000

AC CHAIRS - F

Same design as the AC Chairs except with flat bottom legs, for more stability. For castings such as double-tees, manholes and septic tanks.



PART NO.	SIZE MM	CONCRETE COVER	BAR SIZE	QTY/CTN.
AC05F	15/6-20	5/8"	Mesh-8	1000
AC75F	20/6-20	3/4"	Mesh-8	1000
AC10F	25/6-20	1"	Mesh-8	1000
AC14F	30/6-20	1 1/4"	Mesh-8	1000
AC15F	40/6-20	1 1/2"	Mesh-8	1000
AC20F	50/6-20	2"	Mesh-8	1000

AC CHAIRS - K (STACKABLE)

For top reinforcement, heavy duty, stackable high chairs.



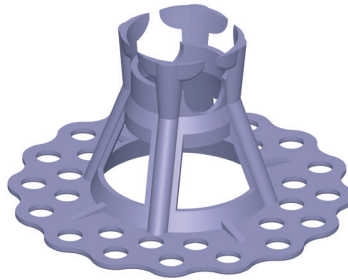
PART NO.	CONCRETE COVER	BAR SIZE	QTY/CTN.
AC20K	2"	Mesh-8	200
AC25K	2-1/2"	Mesh-8	200
AC30K	3"	Mesh-8	150
AC35K	3-1/2"	Mesh-8	150
AC40K	4"	Mesh-8	150
AC45K	4-1/2"	Mesh-8	150
AC50K	5"	Mesh-8	150
AC55K	5-1/2"	Mesh-8	150
AC60K	6"	Mesh-8	150

REBAR SUPPORT



STYROFIX - EXTRA

Special spacer with sand plate used on soft surfaces and insulation material. Extremely stable design with double coverage.



PART NO.	CONCRETE COVER	BAR SIZE	QTY/BAGS.
SF15/20	5/8" - 3/4"	M-#5	500
SF25/30	1" - 1 1/4"	M-#5	500
SF40/50	1 1/2" - 2"	M-#5	200
SF50/60	2" - 2 1/2"	M-#5	100
SF60/70	2 1/2" - 2 3/4"	M-#5	100
SF70/80	2 3/4" - 3 1/4"	M-#5	100
SF90/100	3 1/2" - 4"	M-#5	100

PRIMAFIX

Stable bolster for bottom reinforcement. Low cost, good concrete flow.



PART NO.	CONCRETE COVER	FT./BOX	QTY/CTN.
Prifix 20	3/4"	320	200

BEAM BOLSTER PLASTIC

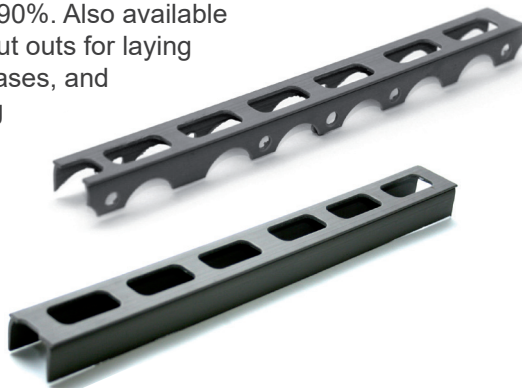
Spacer with unique joints, connects to achieve the length you desire. This spacer provides sturdy support for heavy loads and is conveniently boxed for easy shipping and storage.



PART NO.	CONCRETE COVER	LENGTH	FT./BOX	QTY/CTN.
BBP 3/4"	3/4"	30"	300	120
BBP 1"	1"	30"	250	100
BBP 1.5"	1-1/2"	30"	250	100
BBP 2"	2"	30"	200	80
BBP 2-1/4"	2-1/4"	30"	200	80
BBP 2-3/4"	2-3/4"	30"	200	80
BBP 3"	3"	30"	150	60

U-FIX — SLAB BOLSTER

Plastic rod spacer for cost-effective laying of the reinforcement. Reduces labor costs by 90%. Also available without cut outs for laying on soft bases, and insulating material.

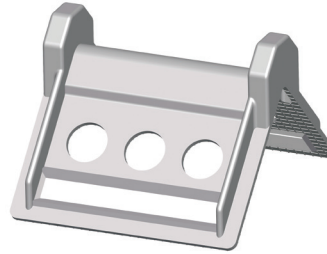


PART NO.	CONCRETE COVER	LF/BDLE	LF/PALLET
U-Fix 20	3/4"	325	18200
U-Fix 20 ISO w/o cut outs	3/4"	325	18200
U-Fix 25	1"	325	13000
U-Fix 25 ISO w/o cut outs	1"	325	13000
U-Fix 30	1-1/4"	325	13000
U-Fix 30 ISO w/o cut outs	1-1/4"	325	13000
U-Fix 40	1-1/2"	195	7020
U-Fix 40 ISO w/o cut outs	1-1/2"	195	7020
U-Fix 50	2"	195	3900
U-Fix 50 ISO w/o cut outs	2"	195	3900

ACCESSORIES

CORNER GUARDS

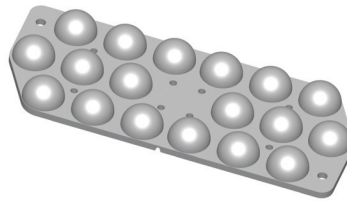
Protects precast concrete parts against damage during transport. Reinforced edges. Side lugs prevent chains, straps and ropes from slipping. Long life. Made from virgin Polyethylene to increase flexibility and withstand colder weather.



PART NO.	STRAP WIDTH	QTY/CTN.
COGDS	4"	150

PANEL PADS

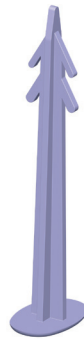
Prevents staining of precast and prestressed concrete units during storage. Scored for even more economical use.



ORDER CODE	STRAP WIDTH UP TO	QTY/CTN.
PPADS	Aprox. 2 1/2" x 6"	600

PANEL TIES

Stable plastic tie for fixing insulating plates.



PART NO.	FOR INSULATION THICKNESS UP TO	OVERALL LENGTH	QTY/CTN.
PTIE 20	3/4"	2"	1000
PTIE 30	1-1/4"	3"	1000
PTIE 35	1-1/2"	3-1/2"	1000
PTIE 40	2"	4"	1000
PTIE 47	3"	4-3/4"	1000
PTIE 60	4"	6"	1000
PTIE 80	6"	8"	1000

CONSPACE

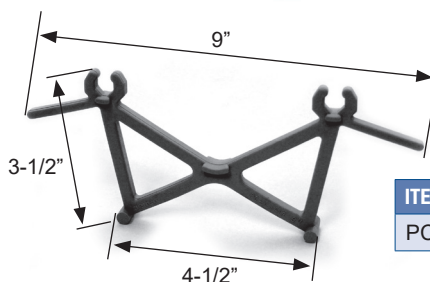
Triple cover fiber concrete spacer with tying wire. Also available without tying wire.



PART NO.	CONCRETE COVER	WIDTH	QTY/CTN.
Conspace 25	3/4"	3/4"	500
	1"		
	1-1/4"		
Conspace 40	1-3/8"	1"	250
	1-1/2"		
	2"		

PARKING CURB SPACER CHAIR

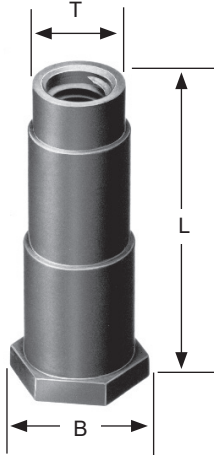
Made of non-corrosive, light weight plastic polymer. The curb spacer chair positions and supports rebar during the casting of parking curbs. All rebars are properly placed in one easy step.



ITEM NO.	CONCRETE COVER	BAR SIZE	QTY/CTN.
PCC-Chair	1-1/2"	3-4	250

THREADED PLASTIC INSERT

Simple and economical method for anchoring to concrete. Available in three sizes manufactured from non-corrosive glass fiber reinforced polyamide.



PART NO.	THREAD TYPE UNC	INSERT LENGTH (L)	BASE DIAMETER (B)	TOP DIAMETER (T)	TENSION CAPACITY (LBS)	QTY. PER CARTON
TPI 038	3/8"	1-5/8"	1"	9/16"	1,650	500
TPI 050	1/2"	2-9/16"	1-1/16"	11/16"	2,280	250
TPI 075	3/4"	2-3/4"	1-1/2"	1"	3,040	200

Note: Tension capacities are based on the material strength of the insert, tested at 70°F with a 3:1 safety factor applied to the ultimate load. Tests were conducted with bolts threaded fully into the insert.

Should not be used for lifting.