

Other

Lifting Systems

Manhole



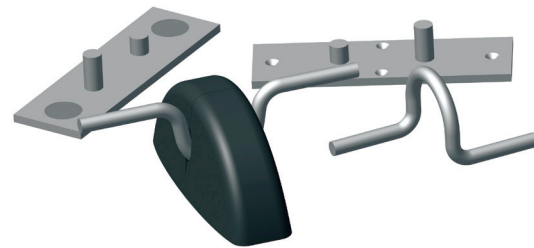
Stone Strong



All Purpose Anchors

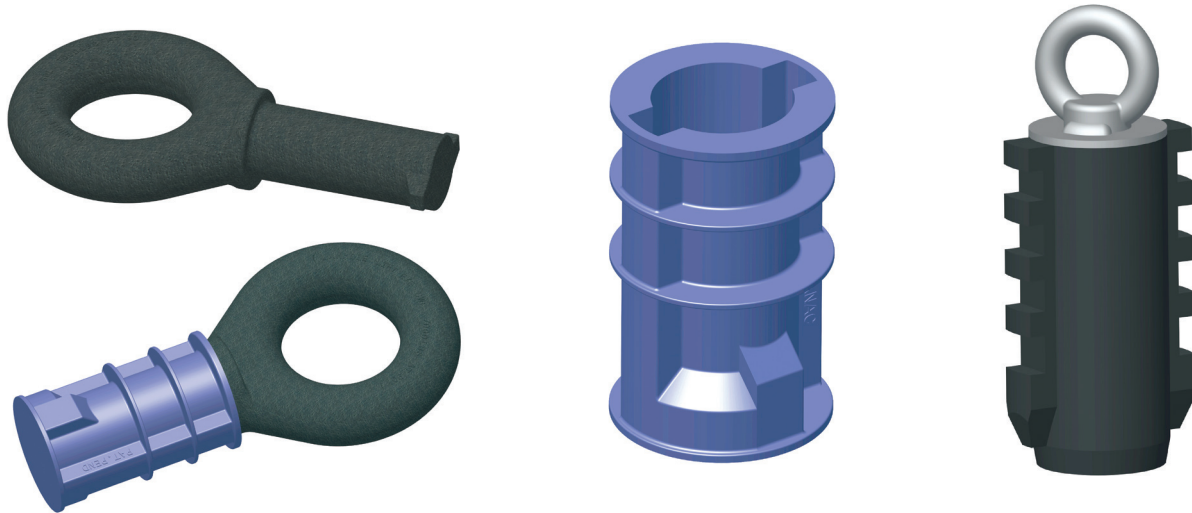


Heba-T



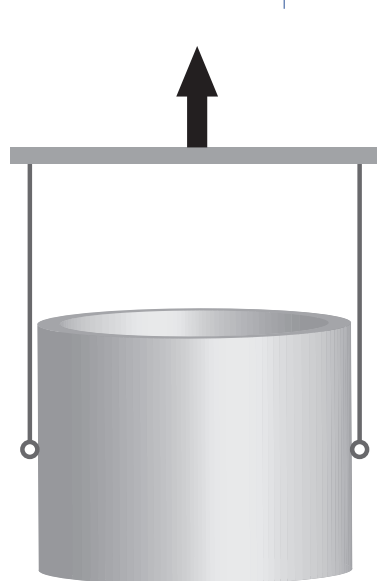
Manhole Lifting System

A four component system that may be used in wet-cast and/or dry-cast manhole production. The system includes the MLE-35 Manhole Lifting Unit, the MPI05-1 Plastic Manhole Insert and the MPI Bolt (and plug) assembly for fixing the manhole plastic insert to the form.

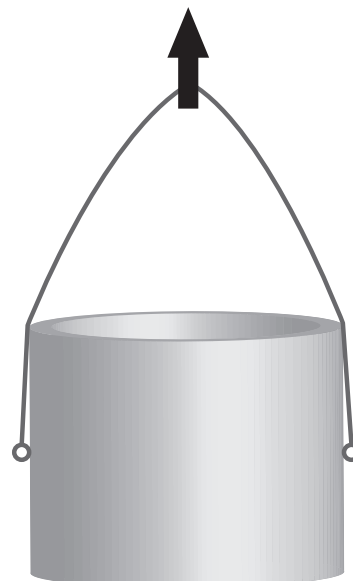


Fits in Walls 4" and up. One piece plastic hole former (MPI05) improves vacuum testing performance.

ITEM CODE	ITEM CODE	ITEM CODE
MLE-35	MPI05-1	MPI BOLT
MLE-35 MANHOLE LIFTING UNIT Lifter to be inserted into the plastic Insert and rotated 90 degrees SWL is 3.5T with 5:1 Safety Factor in SHEAR. THIS LIFTER SHOULD NEVER BE USED IN TENSION	MPI 05 PLASTIC MANHOLE INSERT One piece design with sealed bottom To accommodate vacuum testing Insert to be installed with "keyway" in horizontal position	MPI BOLT (WITH PLUG) For fixing manhole plastic insert to the form



PREFERRED LIFTING METHOD



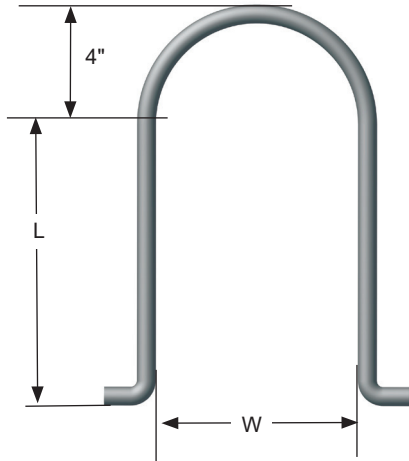
ACCEPTABLE LIFTING METHOD

Stone Strong Anchors



Conac Stone Strong Anchors

The CONAC Stone Strong anchors are engineered to handle all sizes of Strong Stone products. They are made of galvanized carbon steel. They are the only anchors approved by Strong Strong Company.

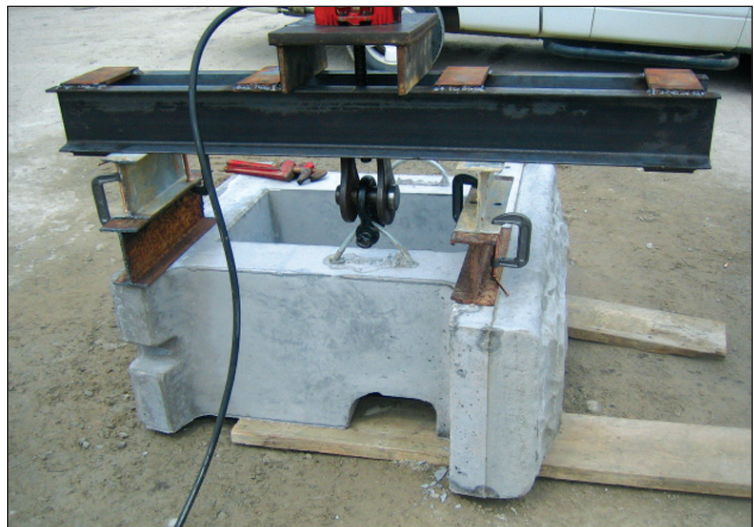


ITEM #	ANCHOR WIRE DIAMETER	W	L	WEIGHT	SWL (LBS)
CSSA-10	14 mm	8"	10-6/8"	2.45 LB	7500
CSSA-10-18	18 mm	8"	10-6/8"	3.90 LB	10000

Safe working loads based on approximate 4:1 Safety Factor in 2,200 psi normal weight concrete.

CSSA-10 used in 6-44 and 3-44 blocks.
 CSSA-10-18 used in the 24SF blocks.

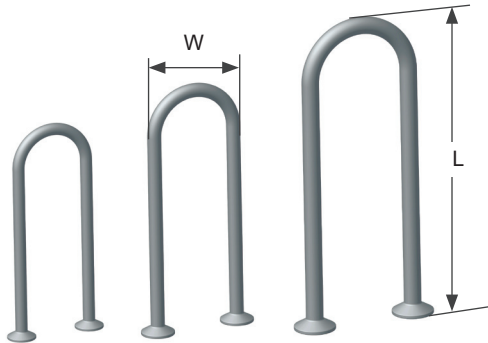
The CONAC Stone Strong Anchor has been tested in actual Stone Strong elements and proven to exceed required load capacities. Test results are available upon request.



Other Lifting Anchors

All Purpose Anchor

Lifting Anchor for Recon retaining walls.
Can replace wire rope anchors in other retaining wall systems and in other miscellaneous products.

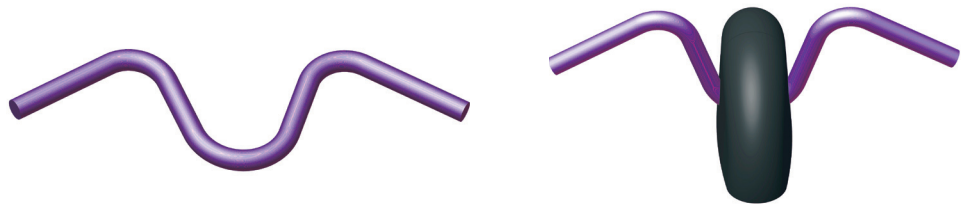


ITEM #	WIRE DIAMETER	WIDTH (W)	LENGTH (L)	WEIGHT	SWL (LBS)
AP-1/4x6	1/4"	2-3/4"	6"	0.175 LB	1600
RECON-2	3/8"	2-3/4"	7"	0.51 LB	4200
AP-7/16x9	7/16"	3-1/2"	9"	0.975 LB	7500

Safe working loads based on approximate 4:1 Safety Factor in 2,500 psi normal weight concrete.

A-W Anchor

For face lifting flat slabs in tension.

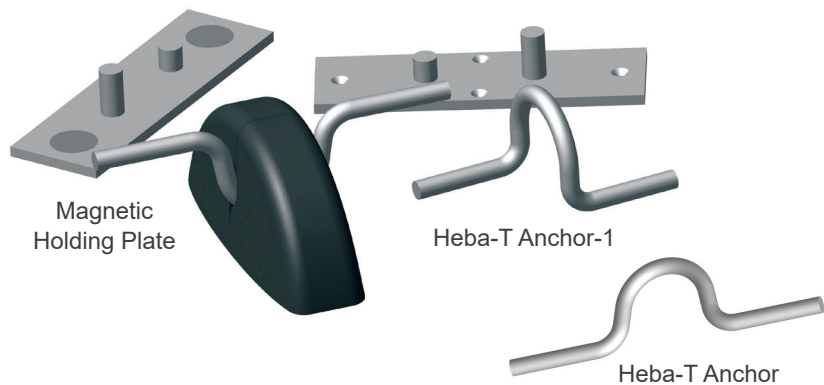


ITEM #	WIRE DIAMETER	WIDTH	HEIGHT	LENGTH	WEIGHT	SWL (LBS)
A-W Anchor	1/2"		3-1/2"	11-3/4"	0.83 LB	4500
A-W RRF		2"	3"	6-1/2"		

Safe working loads based on approximate 4:1 Safety Factor in 4,000 psi normal weight concrete.

Heba-T

Economical lifting for thin slab products. Available with either a steel setting plate or reusable rubber recess former for clean storage. Reusable rubber recess void former allows for standard hook lifting. Designed for 3" thick concrete.



ITEM CODE	DESCRIPTION	TENSION CAPACITY 4:1 SAFETY FACTOR	MIN. CONCRETE THICKNESS	MIN. EDGE DISTANCE
HEBA-T ANCHOR	8MM anchor lifting hook	1,500 lbs	3"	6"
HEBA-T ANCHOR-1	8MM anchor lifting hook, parallel to void	1,500 lbs	3"	6"
HEBA-T MAG	Heba-T magnetic plate			
HEBA-T PLATE	Heba-T steel setting plate			
HEBA-T RRF	Heba-T reusable rubber recess former			

Safe working loads based on approximate 4:1 Safety Factor in 5000 psi normal weight concrete.