

# Plastic

## Spacers



## Locking Wheel

CONAC Locking Wheels are the strongest rebar wheels on the market. The patented locking system will not allow the wheel to rotate around or slide along the rebar, assuring that the rebar will stay in place. CONAC Locking Wheels are available for cover from 1" to 3".



U.S. Patents # 7,451,579

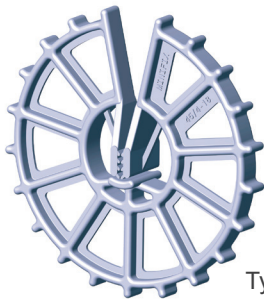
ITEM CODE	CONCRETE COVER	BAR SIZE	QTY/CTN.
RW10L	1"	3 & 4	1000
RW12L	1 1/4"	3 & 4	1000
RW15L	1 1/2"	3-6	1000
RW20L	2"	3-6	500
RW25L	2 1/2"	3-7	300
RW30L	3"	4-8	250

## Rebar Wheels

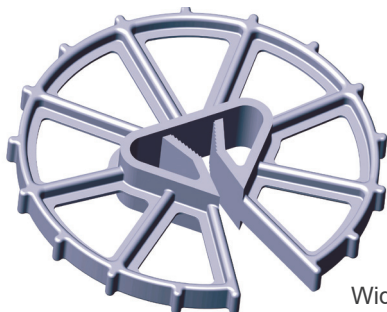
Spacer for universal use. Clamping tongues for a wide range of bar sizes. Wide contact surface and foot members increase load-carrying capacity and prevent tipping. Open construction does not interrupt concrete flow. Minimal contact with formwork.



Type M



Type M5-M6

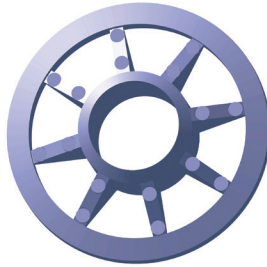


Wide Range Rebar

ITEM CODE	SIZE MM	CONCRETE COVER	BAR SIZE	QTY/CTN.
RW05M	12.5/4-8	1/2"	1-2	4000
RW58M	15/4-8	5/8"	1-2	5000
RW58M4	15/8-12	5/8"	2-4	2500
RW585	15/14-18	5/8"	5-6	2000
RW75M	20/4-8	3/4"	1-2	2000
RW75M3	20/6-10	3/4"	2-3	2500
RW75M5	20/6-18	3/4"	1-6	3000
RW10M	25/6-10	1"	2-3	1200
RW10M5	25/4-18	1"	1-6	500
RW103	25/10-14	1"	3-5	1000
RW121	30/4-8	1 1/4"	1-2	1000
RW126	30/4-18	1 1/4"	1-6	500
RW15M	40/4-8	1 1/2"	1-2	1000
RW15M5	40/4-18	1 1/2"	1-6	1000
RW154	40/12-20	1 1/2"	4-6	250
RW20M	50/4-10	2"	1-3	1000
RW20M6	50/4-18	2"	1-6	250
RW204	50/12-20	2"	4-6	500
RW238	60/4-18	2 1/2"	1-6	250
RW30M5	75/4-18	3"	1-6	200
RW306	75 20-26	3"	6-7	250
RW449	100/12-32	4"	4-9	75

## Spuncast Wheel

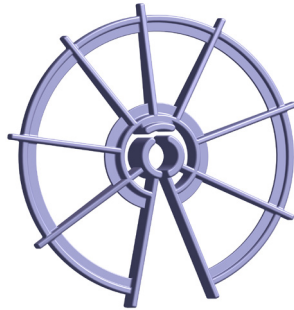
Special rebar wheel used in the manufacturing of spuncast utility poles.



ITEM CODE	CONCRETE COVER	BAR SIZE	QTY/CTN.	COLOR
RW 10MM	3/4"	5	2000	Gray
RW 10MMB	3/4"	5	2000	Black

## Picofix

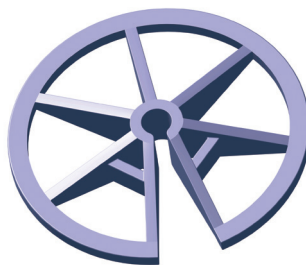
Economical round spacer with extra wide bar support. Minimal formwork contact.



ITEM CODE	SIZE MM	CONCRETE COVER	BAR SIZE	QTY/CTN.
RW58MP	15/5-10	5/8"	M-3	8000
RW75MP	20/5-10	3/4"	M-3	4000
RW10MP	25/4-8	1"	M-3	4000
RW12MP	30/5-10	1 1/4"	M-3	4000

## Sparfix

Inexpensive spacer for use in precast.



ITEM CODE	SIZE MM	CONCRETE COVER	BAR SIZE	QTY/CTN.
RW05MS	10/3-5	3/8"	Mesh	18000
RW58MS	15/3-5	5/8"	Mesh	4000

## Normfix

Heavy duty chairs.



ITEM CODE	CONCRETE COVER	BAR SIZE	QTY/CTN.
Normfix20	3/4"	2-7	500
Normfix25	1"	2-7	500
Normfix30	1 1/4"	2-7	500
Normfix40	1 1/2"	2-7	250
Normfix50	2"	2-7	250

## Bar Clips

Stable clip-on spacer for #4 & #5 Bar.



ITEM CODE	SIZE (MM)	CONCRETE COVER	BAR SIZE	QTY/CTN.
BCL75	20/12-16	3/4"	4-5	1000
BCL10	25/12-20	1"	4-6	1000
BCL15	40/12-16	1-1/2"	4-5	1000
BCL20	50/12-20	2"	4-6	2000

## Mesh Clips

Economically priced spacer for use in low-load situations.



ITEM CODE	SIZE (MM)	CONCRETE COVER	BAR SIZE	QTY/CTN.
MCL75	20/5	3/4"	1	10000
MCL10	25/5	1"	1	10000
MCL20	50/5	2"	1	5000

## Rebar Clips

Stable bottom spacer with large clamp range.



ITEM CODE	SIZE (MM)	CONCRETE COVER	BAR SIZE	QTY/CTN.
RCL05	15/4-12	5/8"	1-4	4000
RCL75	20/4-16	3/4"	1-5	4000
RCL10	25/4-16	1"	1-5	3000
RCL12	30/4-12	1 1/4"	1-5	2000
RCL15	40/4-16	1 1/2"	1-5	1000
RCL20	50/4-18	2"	1-6	1000
RCL24	60/4-18	2 1/4"	1-6	1000
RCL25	65/4-18	2 1/2"	1-6	1000
RCL30	75/6-20	3"	2-6	500

## Snapfix

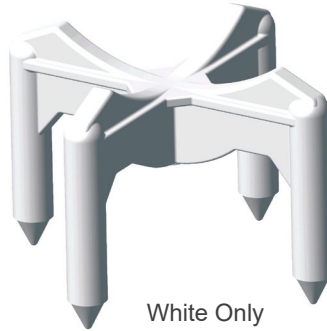
Stable, sturdy spacer. Low-cost, good concrete flow. Minimal formwork contact because of edge position.



ITEM CODE	CONCRETE COVER	BAR SIZE	QTY/CTN.
Snapfix25	1"	M-4	1000
Snapfix40	1 1/2"	M-4	1000
Snapfix50	2"	M-4	1000
Snapfix80	3"	M-4	250
Snapfix90	3 1/2"	M-4	250
Snapfix100	4"	M-4	250

## Cross Chair

Cross chair is a stable, sturdy chair for bottom reinforcement. Allows excellent concrete flow with minimal form contact.



White Only

ITEM CODE	CONCRETE COVER	BAR SIZE	QTY/CTN.
CR75	3/4"	FOR ALL BAR SIZES	1000
CR10	1"		1000
CR12	1-1/4"		1000
CR15	1-1/2"		1000
CR20	2"		750

## Stackable High Cross Chair

High Cross Chair is stable, sturdy chair for top matt reinforcing. Chairs are stackable to provide additional height.



White Only

ITEM CODE	CONCRETE COVER	BAR SIZE	QTY/CTN.
CR25	2-1/2"	FOR ALL BAR SIZES	200
CR27	2-3/4"		200
CR30	3"		200
CR35	3-1/2"		200
CR40	4"		200
CR45	4-1/2"		200
CR50	5"		200
CR52	5-1/4"		200
CR55	5-1/2"		200
CR60	6"		150
CR65	6-1/2"		160
CR70	7"		160

## High Chair (Wire)

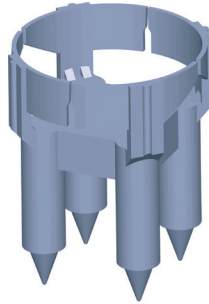
High chair is a sturdy chair made of steel wire for bottom reinforcement. Allows excellent concrete flow with minimal form contact. The feet are epoxy coated to prevent corrosion.



ITEM CODE	CONCRETE COVER	BAR SIZE	QTY/CTN.
HC 3/4"	3/4"	FOR ALL BAR SIZES	100
HC 1"	1"		100
HC 1.5"	1.5"		100
HC 2"	2"		100
HC 2.5"	2.5"		100
HC 3"	3"		100
HC 3.5"	3.5"		100
HC 4"	4"		100
HC 4.5"	4.5"		100
HC 5"	5"		100
HC 5.5"	5.5"		100
HC 6"	6"		100
HC 7"	7"		50
HC 8"	8"		50
HC 9"	9"		50
HC 10"	10"		50
HC 11"	11"		50

## AC Chairs

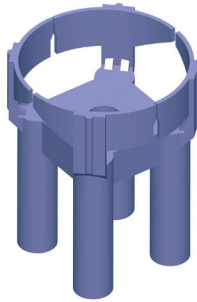
Stable for vertical and horizontal reinforcement. Good concrete flow. Tapered legs to ensure minimal form contact. Perfect for exposed aggregate surfaces.



ITEM CODE	SIZE MM	CONCRETE COVER	BAR SIZE	QTY/CTN.
AC05	15/6-20	5/8"	Mesh-8	1000
AC75	20/6-20	3/4"	Mesh-8	1000
AC10	25/6-20	1"	Mesh-8	1000
AC14	25/6-20	1-1/4"	Mesh-8	1000
AC15	40/6-20	1-1/2"	Mesh-8	1000
AC20	50/6-20	2"	Mesh-8	1000

## AC Chairs - F

Same design as the AC Chairs except with flat bottom legs, for more stability. For castings such as double-tees, manholes and septic tanks.



ITEM CODE	SIZE MM	CONCRETE COVER	BAR SIZE	QTY/CTN.
AC10F	25/6-20	1"	Mesh-8	1000
AC15F	40/6-20	1-1/2"	Mesh-8	500

## AC Chairs - K (Stackable)

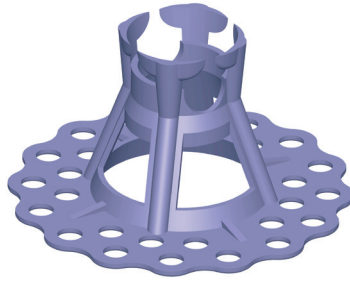
Heavy duty, stackable high chairs for top reinforcement.



ITEM CODE	CONCRETE COVER	BAR SIZE	QTY/CTN.
AC30K	3"	Mesh-8	150
AC35K	3-1/2"	Mesh-8	150
AC40K	4"	Mesh-8	150
AC45K	4-1/2"	Mesh-8	150
AC50K	5"	Mesh-8	150
AC55K	5-1/2"	Mesh-8	150

## Styfofix - Extra

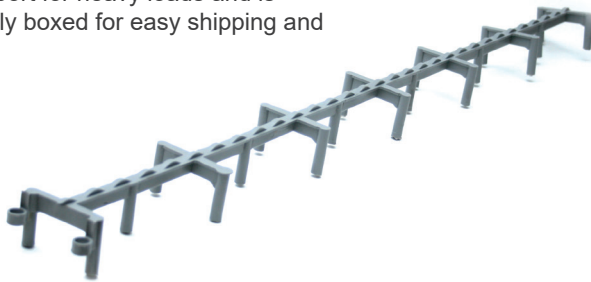
Special spacer with sand plate used on soft surfaces and insulation material. Extremely stable design with double coverage.



ITEM CODE	CONCRETE COVER	BAR SIZE	QTY/BAGS.
SF15/20	5/8" - 3/4"	M-#5	500
SF25/30	1" - 1 1/4"	M-#5	500
SF50/60	2" - 2 1/2"	M-#5	100
SF70/80	2 3/4" - 3 1/4"	M-#5	100

## Beam Bolster Plastic

Spacer with unique joints, connects to achieve the desired length. This spacer provides sturdy support for heavy loads and is conveniently boxed for easy shipping and storage.



ITEM CODE	CONCRETE COVER	LENGTH	FT./BOX	QTY/CTN.
BBP 3/4"	3/4"	30"	300	120
BBP 1"	1"	30"	250	100
BBP 1.5"	1-1/2"	30"	250	100
BBP 2"	2"	30"	200	80
BBP 2-1/4"	2-1/4"	30"	200	80
BBP 2-3/4"	2-3/4"	30"	200	80
BBP 3"	3"	30"	150	60

## U-Fix — Slab Bolster

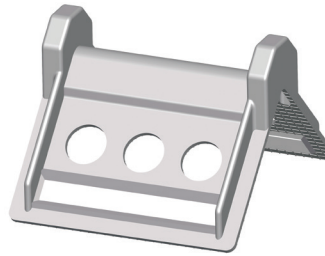
Plastic rod spacer for cost-effective laying of reinforcement. Reduces labor costs by up to 90%. Also available without cut outs for laying on soft bases and insulating material.



ITEM CODE	CONCRETE COVER	LF/BDLE	LF/PALLET
U-Fix 15	1/2"	325	18200
U-Fix 20	3/4"	325	18200
U-Fix 25	1"	325	13000
U-Fix 30	1-1/4"	325	13000
U-Fix 40	1-1/2"	195	7020
U-Fix 50	2"	195	3900

## Corner Guards

Protects precast concrete parts against damage during transport. Reinforced edges. Side lugs prevent chains, straps and ropes from slipping. Long life. Made from virgin Polyethylene to increase flexibility and withstand colder weather.

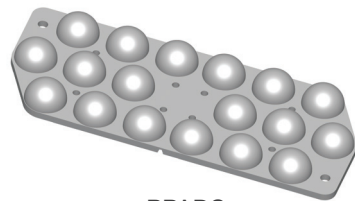


ITEM CODE	STRAP WIDTH	QTY/CTN.
COGDS	4"	150

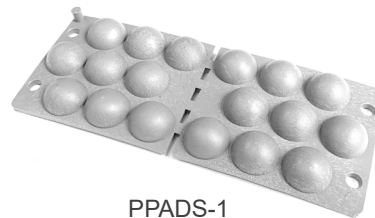
## Panel Pads

Prevents staining of precast and prestressed concrete units during storage. Scored for more economical use.

ORDER CODE	DIMENSIONS	THICKNESS	QTY/CTN.
PPADS	2-1/8" x 5-1/4"	3/8"	600
PPADS-1	2-1/2" x 5-1/2"	1/2"	600



PPADS



PPADS-1

## Conspace

Triple cover fiber concrete spacer with tying wire. Also available without tying wire.



ITEM CODE	CONCRETE COVER	WIDTH	QTY/CTN.
Conspace 25	3/4"	3/4"	500
	1"		
	1-1/4"		
Conspace 40	1-3/8"	1"	250
	1-1/2"		
	2"		